

Boarders

Loreto founded both boarding and day schools. Often in the early years these were separate schools such as in the case of Ballarat. Mary's Mount, the boarding school, was opened on 29th September 1875 and Loreto Convent Dawson Street, the day school, was opened on 4th November 1875.

By 1940, Mary's Mount was also taking day pupils and from 1982 there were day pupils only.

Boarders lived at Mary's Mount, going home only on term holidays, sometimes only at the end of the year.



First Boarders at Mary's Mount

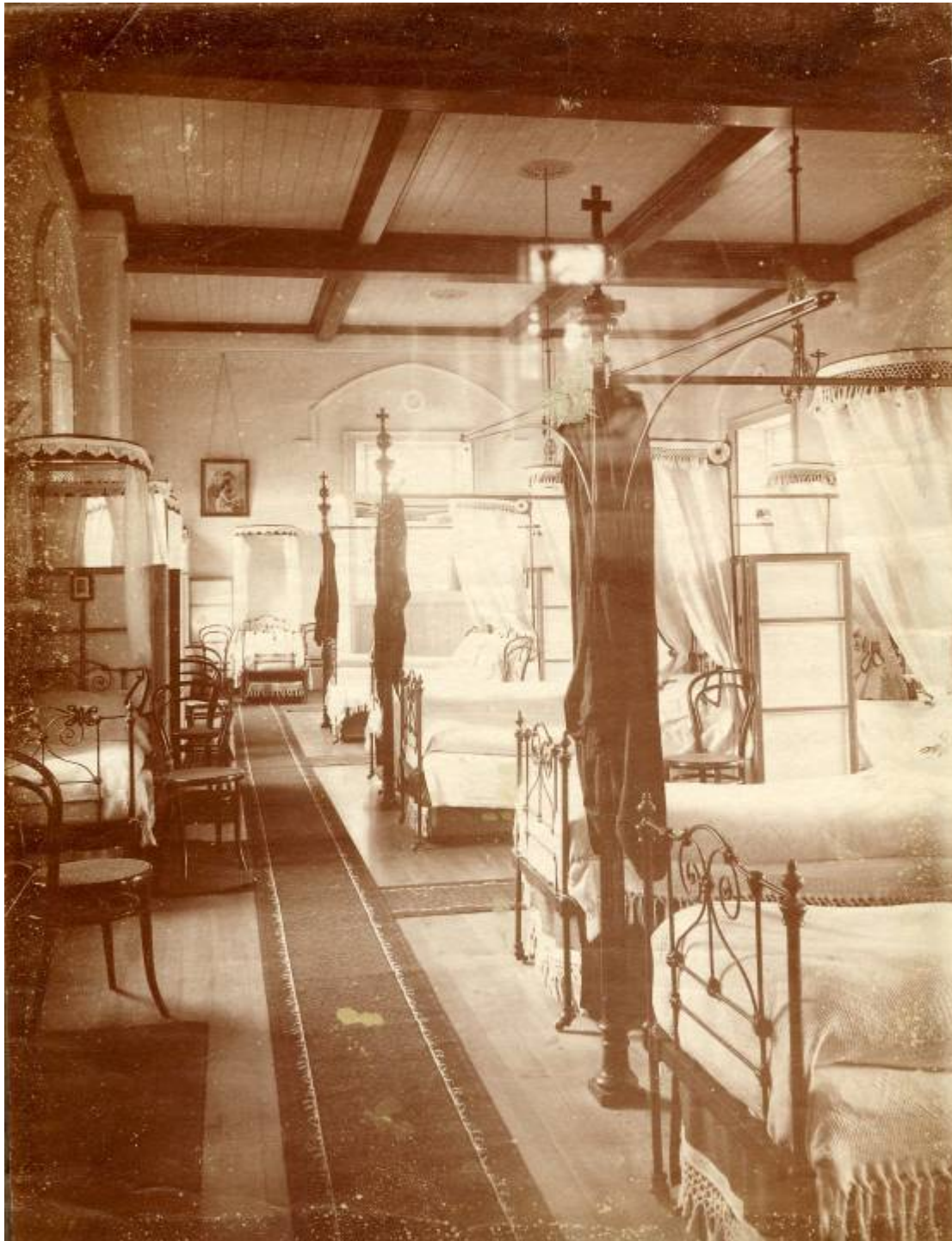
Dormitories

At Mary's Mount the 'Residential Wing' was built in 1882 adjoining the east side of the original house. Designed by William Tappin, later to be the architect of the Loreto Chapel, the wing comprised a school room on the ground floor (now the staff study) and two floors of dormitories (now classrooms). Above the classrooms in the attic were the dressing rooms.

St. Joseph's Wing (now offices and student reception) was built in 1887. On the ground floor were classrooms and in the attic dressing rooms which became seniors' cubicles in 1963.



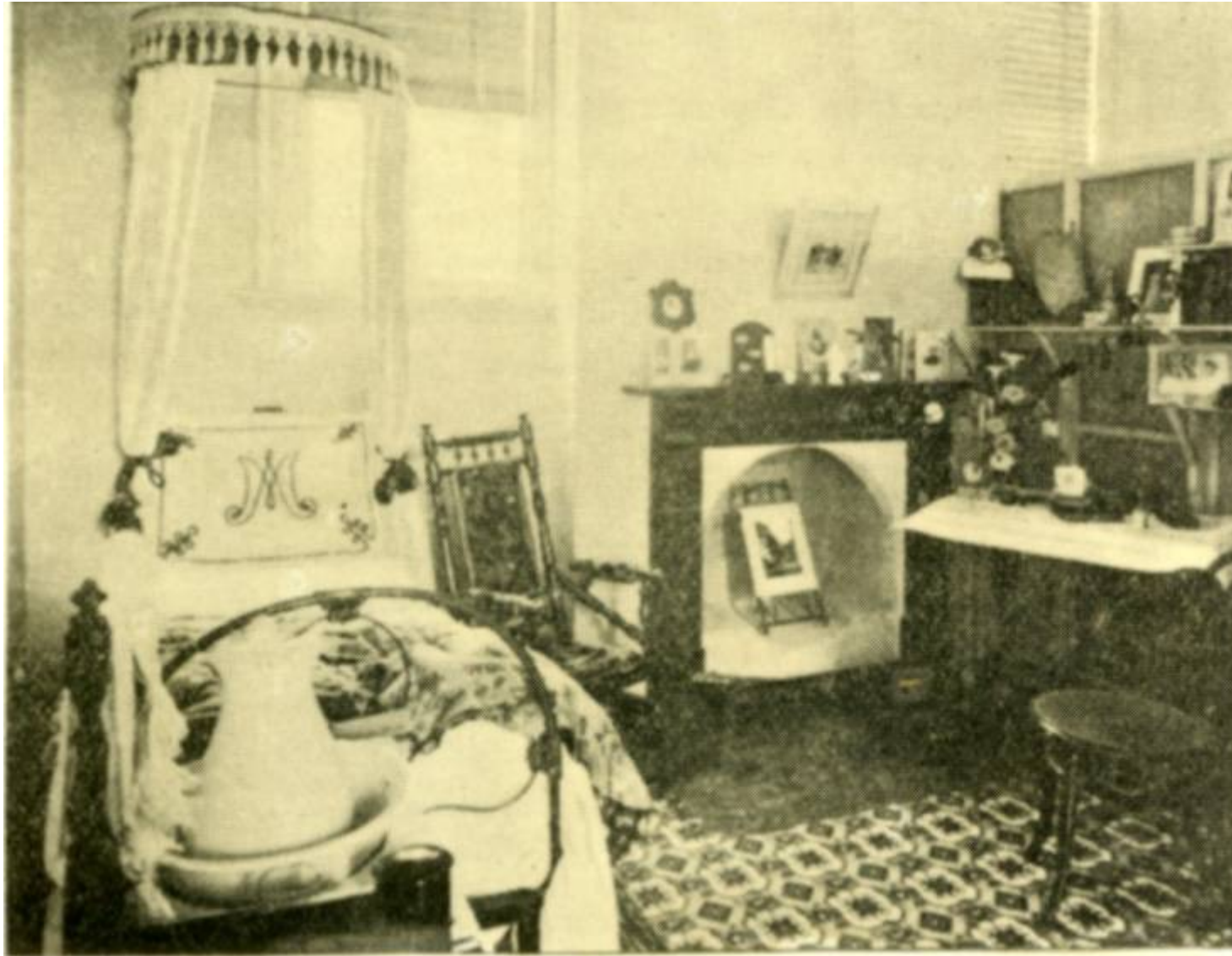
The Residential Wing, front building right, from the vegetable garden and orchard



Mary's Mount Dormitory



Mary's Mount Dormitory



Cubicle Dormitory for a Senior Student



Boarders at Work



Boarders at Recreation





Archery Club.





Saturday evening Procession. Loretto Abbey Ballarat Australia



Refectory, or Dining Room, decorated for a celebration, 1895





1901 Photo of Mary's Mount pupils with their various occupations demonstrating the curriculum.